



UX

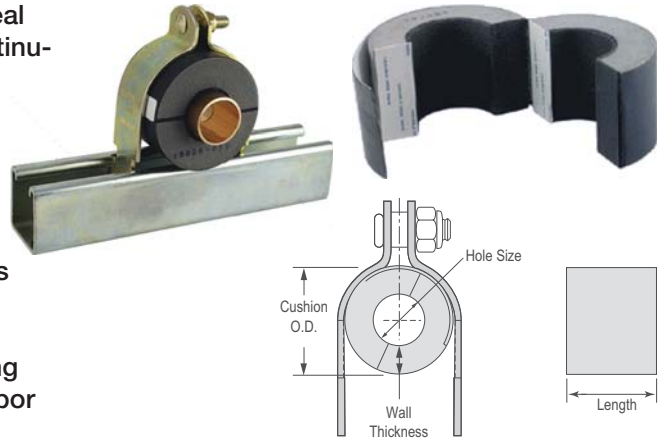
Cush-A-Therm™ Clamp

The Cush-A-Therm Clamp provides a crush-resistant, airtight seal for chilled refrigeration or mechanical pipelines that require continuous insulation.

The rigid foam construction has an insulating tape inner lining which supports tube and absorbs vibration of operating pipelines.

The outer cover consists of a special rubber coating which seals the cushion after installation in order to prevent condensation.

The clamp's strong closed-cell structure is ideal for liquid cooling lines to prevent condensation, save energy and maintain the vapor barrier.



DIMENSIONS					NOMINAL 1/2" WALL THICKNESS		NOMINAL 3/4" WALL THICKNESS		NOMINAL 1" WALL THICKNESS1		NOMINAL 1 1/2" WALL THICKNESS		NOMINAL 2" WALL THICKNESS	
HOLE SIZE	COPPER I.D.	PIPE O.D.	IPS	LENGTH	FIG#	CUSHION O.D.	FIG#	CUSHION O.D.	FIG#	CUSHION O.D.	FIG#	CUSHION O.D.	FIG#	CUSHION O.D.
3/8	1/4	3/8	-	2.953	UX3812	1.33	UX3834	1.81	UX3810	2.31	UX3815	3.31	-	-
1/2	3/8	1/2	1/4	2.953	UX1212	1.44	UX1234	1.89	UX1210	2.39	UX1215	3.39	-	-
5/8	1/2	5/8	3/8	2.953	UX5812	1.56	UX5834	2.05	UX5810	2.54	UX5815	3.54	UX5820	4.54
3/4	5/8	3/4	-	2.953	UX3412	1.69	UX3434	2.22	UX3410	2.71	UX3415	3.71	UX3420	4.71
7/8	3/4	7/8	1/2	2.953	UX7812	1.81	UX7834	2.44	UX7810	2.82	UX7815	3.82	UX7820	4.82
1 1/8	1	1 1/8	3/4	2.953	UX11812	2.19	UX11834	2.76	UX11810	3.06	UX11815	4.06	UX11820	5.06
1 3/8	1 1/4	1 3/8	1	2.953	UX13812	2.31	UX13834	3.19	UX13810	3.33	UX13815	4.33	UX13820	5.33
1 5/8	1 1/2	1 5/8	1 1/4	2.953	UX15812	2.56	UX15834	3.35	UX15810	3.65	UX15815	4.65	UX15820	5.65
1 7/8	-	1 7/8	-	2.953	UX17812	2.81	UX17834	3.58	UX17810	4.43	UX17815	5.43	UX17820	6.43
2 1/8	2	2 1/8	-	2.953	UX21812	3.23	UX21834	3.86	UX21810	4.16	UX21815	5.16	UX21820	6.16
2 3/8	2 1/4	2 3/8	2	2.953	UX23812	3.48	UX23834	4.29	UX23810	3.92	UX23815	4.92	UX23820	5.92
2 5/8	2 1/2	2 5/8	-	3.937	UX25812	4.13	UX25834	4.87	UX25810	4.87	UX25815	5.87	UX25820	6.87
2 7/8	-	2 7/8	2 1/2	3.937	UX27812	4.38	UX27834	4.57	UX27810	4.67	UX27815	5.67	UX27820	6.67
3 1/8	3	3 1/8	-	3.937	UX31812	4.63	UX31834	5.00	UX31810	5.14	UX31815	6.14	UX31820	7.14
3 1/2	-	3 1/2	3	3.937	UX31212	4.88	UX31234	5.35	UX31210	5.89	UX31215	6.89	UX31220	7.89
3 5/8	3 1/2	3 5/8	-	3.937	UX35812	5.13	UX35834	5.94	UX35810	6.44	UX35815	7.44	UX35820	8.44
4 1/8	4	4 1/8	3 1/2	3.937	UX41812	5.63	UX41834	6.14	UX41810	6.48	UX41815	7.48	UX41820	8.48

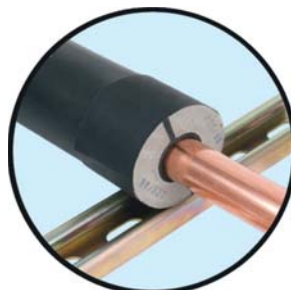
Note: Complete assembly supplied with gold electro-galvanized strut clamp and hardware.

Features:

- Temperature range: -70°F to +250°F
- Flammability is Self-Extinguishing as tested under ASTM D 635
- Maintains thermal barrier protection
- Prevents condensation
- Properly supports pipe and tube
- Absorbs vibration
- Polyurethane foam laminated with a rubber lining



1. Slide insulation over pipe. Self adhesive surfaces provide seal.



2. Put in place and glue to insulation.



3. Wrap and seal with ProTape.