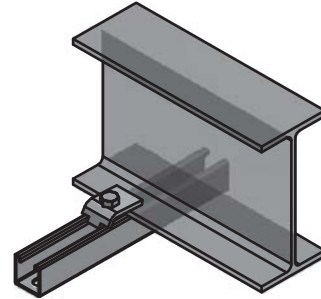
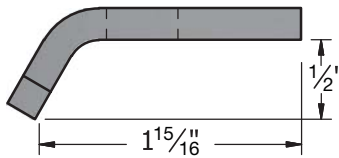
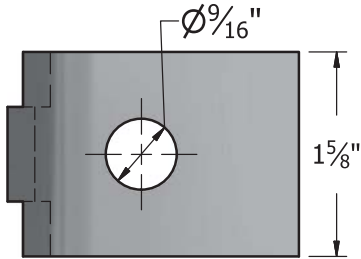
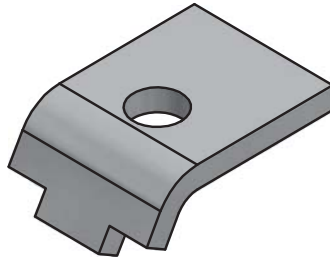




**SBC686 (C403)**

**Beam Clamp**

Electro-Galvanized  
Wt. 0.30  
50/Box



**Note:** Requires 1/2" - 13 x 1 3/4" Hex Bolt and 1/2" Strut Nut.  
(Hex Bolt and Strut Nut are sold separately.)

**Maximum Recommended Load:** 600 lbs with 12ga strut  
500 lbs with 14ga strut