



KLO-7

Klo-Shure® 7-Series Insulation Coupling w/ Strut Clamp

SERVICE: For use on tube and pipe runs subject to damage from shock and vibration. Insulates the tube and pipe runs and ensures a complete vapor barrier, eliminating mold and corrosion. Sized for use with elastomeric insulation and acceptable for horizontal, vertical & inverted installations. No cutting, taping, gluing or foam necessary.

MATERIAL: Carbon Steel with a Dupont Hytel Thermoplastic insert

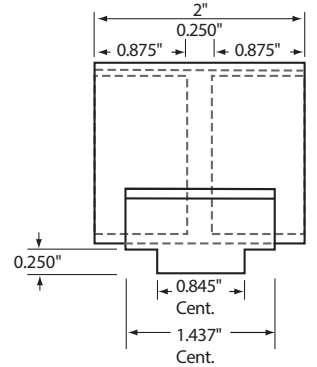
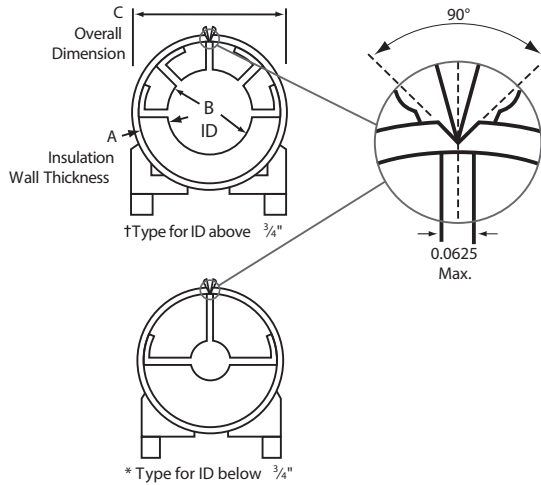
FINISH: Zinc-Dichromate

APPROVALS: UL Classified Flame/Smoke for use in plenums

ORDERING: Specify figure number.



INSULATION THICKNESS A	FIG#	KLO-SHURE ID - TUBE OD B	OVERALL DIMENSION C	STD. PKG.
3/8	723025	1/4	1.12	40
	723037	3/8	1.25	25
	723050	1/2	1.37	20
	723062	5/8	1.50	20
	723075	3/4	1.62	20
	723087	7/8	1.75	20
	723100	1	1.87	20
	723112	1 1/8	2.00	20
	723137	1 3/8	2.25	20
	723162	1 5/8	2.50	10
723212	2 1/8	3.00	10	
1/2	724025	1/4	1.37	20
	724037	3/8	1.50	25
	724050	1/2	1.62	20
	724062	5/8	1.75	20
	724075	3/4	1.87	20
	724087	7/8	2.00	20
	724100	1	2.12	20
	724112	1 1/8	2.25	20
	724137	1 3/8	2.50	20
	724162	1 5/8	2.75	10
	724212	2 1/8	3.25	10
	724262	2 5/8	3.75	10
	724312	3 1/8	4.25	10
	724362	3 5/8	4.75	10
724412	4 1/8	5.25	10	
3/4	726025	1/4	1.87	20
	726037	3/8	2.00	20
	726050	1/2	2.12	10
	726062	5/8	2.25	10
	726075	3/4	2.37	10
	726087	7/8	2.50	10
	726112	1 1/8	2.75	10
	726137	1 3/8	3.00	10
	726162	1 5/8	3.25	10
	726212	2 1/8	3.75	10
	726262	2 5/8	4.25	10
	726312	3 1/8	4.75	10
	726362	3 5/8	5.25	10
	726412	4 1/8	5.75	10



INSULATION THICKNESS A	FIG#	KLO-SHURE ID - TUBE OD B	OVERALL DIMENSION C	STD. PKG.	
1	728031	5/16	2.43	10	
	728037	3/8	2.50	10	
	728050	1/2	2.62	10	
	728062	5/8	2.75	10	
	728075	3/4	2.87	10	
	728087	7/8	3.00	10	
	728112	1 1/8	3.25	10	
	728137	1 3/8	3.50	10	
	728162	1 5/8	3.75	10	
	728212	2 1/8	4.25	10	
	728262	2 5/8	4.75	10	
	728312	3 1/8	5.25	10	
	728362	3 5/8	5.75	10	
	728412	4 1/8	6.25	5	
	1 1/2	729031	5/16	3.43	10
		729037	3/8	3.50	10
		729050	1/2	3.62	10
		729062	5/8	3.75	10
729087		7/8	4.00	10	
729112		1 1/8	4.25	10	
729137		1 3/8	4.50	10	
729162		1 5/8	4.75	10	
729212		2 1/8	5.25	10	
729262		2 5/8	5.75	10	
729312	3 1/8	6.25	5		