



**FIG. 845**

**Wood-Knocker® II+**



**SERVICE:** To provide a pre-positioned hanger rod attachment to the underside of concrete slabs on wood forms. Used as a cast-in-place concrete anchor in 3,000 psi minimum compressive strength normal and lightweight, cracked and uncracked concrete loaded by static and occasional tensile and shear forces from piping or similar services.

**MATERIAL:** Carbon Steel meeting AISI 1008 and Engineered Plastic (Polypropylene)

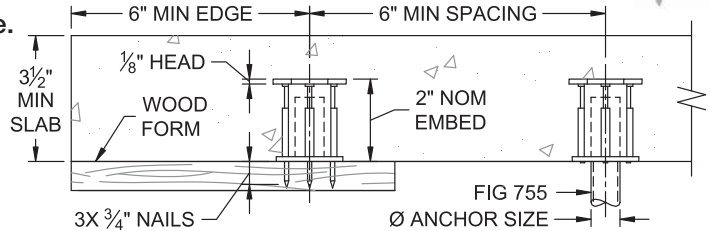
**FINISH:** Electro-Galvanized meeting ASTM B633

**MAX TEMP:** 200°F

**APPROVALS:** FM, UL, ICC-ES ESR-3657, IBC 2012

**ORDERING:** Specify figure number and anchor size.

ANCHOR SIZE	COLOR CODE	WEIGHT EACH, LBS.
3/8	GREEN	0.248
1/2	YELLOW	0.220
5/8	RED	0.356
3/4	PURPLE	0.348



**NOTE:** See Powers Fasteners, Wood-Knocker for maximum recommended loads and additional details.