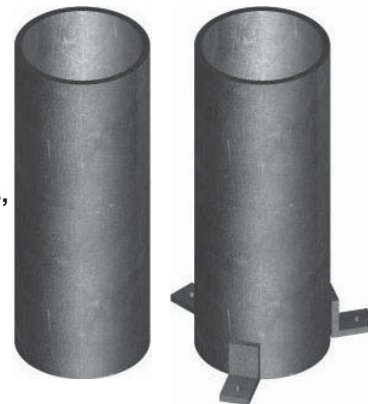
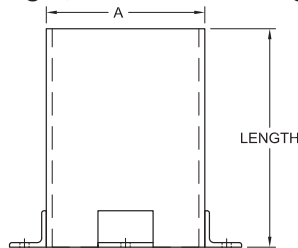




FIG. 830

Pipe Sleeve

- SERVICE:** For attaching to concrete forms to provide a smooth sealable channel for piping, eliminating the need to core drill. Pipe sleeves are cut from standard weight pipe with optional lugs to facilitate fastening.
- MATERIAL:** Carbon Steel or 304/316 Stainless Steel
- FINISH:** Black, Electro-Galvanized or Hot-Dip Galvanized
- ORDERING:** Specify figure number, nominal pipe size A, length, with or without lugs, material and finish.



Shown with optional lugs.