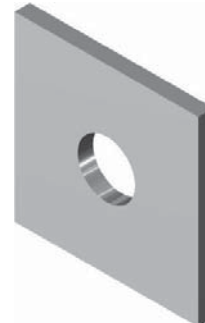




FIG. 805

Steel Washer Plate

SERVICE: For use as a heavy duty washer to suspend hanger rods.
MATERIAL: Carbon Steel or 304/316 Stainless Steel
FINISH: Black, Electro-Galvanized or Hot-Dip Galvanized
ORDERING: Specify figure number, rod tapping size, material and finish. (Steel in 1/4" thickness is kept in stock for all rod sizes. Special size and thickness available upon request.)



ROD SIZE	STOCK SIZE	WEIGHT EACH, LBS.
3/8	2 x 2 x 1/4	0.28
1/2	2 x 2 x 1/4	0.28
3/8	3 x 3 x 1/4	0.62
1/2	3 x 3 x 1/4	0.62
5/8	3 x 3 x 1/4	0.62
3/4	3 x 3 x 1/4	0.62
3/8	4 x 4 x 1/4	1.05
1/2	4 x 4 x 1/4	1.05
5/8	4 x 4 x 1/4	1.05
3/4	4 x 4 x 1/4	1.05
7/8	4 x 4 x 1/4	1.05