



FIG. 740

Weldless Eye Nut



SERVICE: Recommended for use on pipe hanger assemblies between pipe attachment and structural attachment. Provides vertical hanger rod adjustment. Permits horizontal pipe movement through hanger rod rotation. For hanger assemblies loaded by static and dynamic tensile forces from piping or similar services.

MATERIAL: Carbon Steel meeting AISI C-1030
Stainless Steel Type 316 meeting ASTM A182

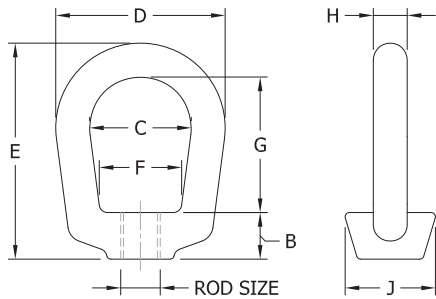
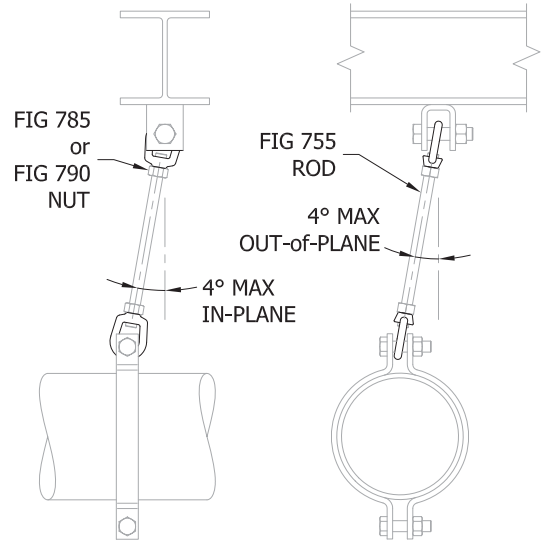
FINISH: Black or Hot-Dip Galvanized meeting ASTM A153

MAX TEMP: 650°F for Black Carbon Steel and Stainless Steel
350°F for Hot-Dip Galvanized Carbon Steel

STANDARDS: MSS SP-58 Type 17, FS WW-H-171E Type 17

ORDERING: Specify figure number, rod size, material and finish.

ROD SIZE	B	C	D	E	F	G	H	J	WEIGHT EACH, LBS.	MAX. REC. LOAD, LBS.
3/8	1 ¹¹ / ₁₆	1 1/2	2 1/4	3 3/16	1 3/16	2	1/2	1 3/8	0.63	730
1/2									0.61	1350
5/8									0.59	2160
3/4									0.56	3230
7/8	1	2	3 1/4	4 3/8	1 11/16	2 5/8	3/4	1 15/16	1.72	4480
1									1.67	5900
1 1/8	1 1/4	2 1/2	4 1/4	5 5/8	1 13/16	3 3/8	1	2 3/8	3.64	7420
1 1/4									3.55	9500
1 1/2									3.45	13800



Note:
1. Hanger rod in-plane and out-of-plane rotation resultant shall be ≤ 4° per MSS SP-58.