

FIG. 695

Beam Clamp Assembly

SERVICE: To hang piping with a single threaded rod from the bottom center of wide flange beams (W-shape) or American standard beams (S-shape). Provides vertical hanger rod adjustment. Permits horizontal pipe movement through hanger rod rotation. For hanger assemblies loaded by static tensile forces from piping or similar services.

MATERIAL: Carbon Steel meeting ASTM: A36, A307 Gr A, A563 Gr A
Stainless Steel Type 304 and 316 meeting ASTM: A240, F593, and F594

FINISH: Black or Hot-Dip Galvanized meeting ASTM A123

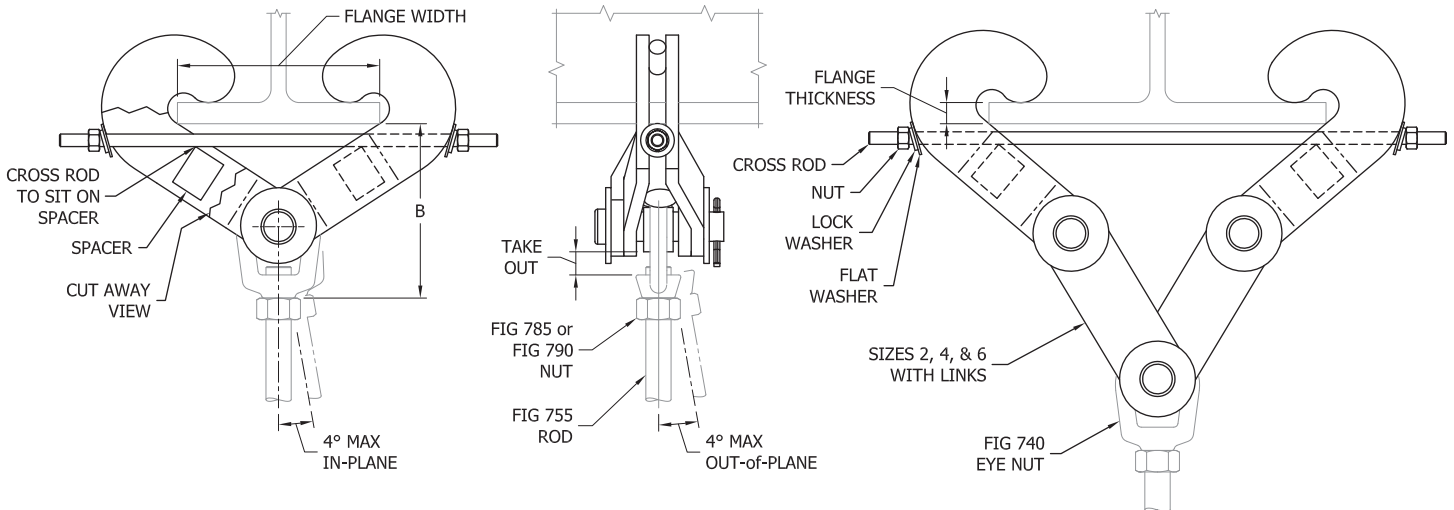
MAX TEMP: 650°F for Black Carbon Steel and Stainless Steel
350°F for Hot-Dip Galvanized Carbon Steel

STANDARDS: MSS SP-58 Type 28 and Type 29, FS WW-H-171E Type 28 and Type 29

ORDERING: Specify figure number, size, flange width, flange thickness, rod size, material and finish. (Order FIG. #740 Weldless Eye Nut and hardware separately.)

SIZE	MAX FLG THK	FLG WIDTH	MAX ROD	TAKE OUT	WEIGHT EACH, LBS.	MAX. REC. LOAD, LBS.
1	5/8	4 to 8	3/4	1 1/16	7.2	3230
2	5/8	7 to 15	3/4	1 1/16	13.6	3230
3	3/4	4 to 8	1	1 1/16	9.8	5900
4	3/4	7 to 15	1	1 1/16	17.4	5900
5	1	5 to 9	1 1/2	1 1/16	25.5	13800
6	1	8 to 16	1 1/2	1 1/16	42.8	13800

SIZE	DIMENSION B (±1/4")												
	FLANGE WIDTH												
	4	5	6	7	8	9	10	11	12	13	14	15	16
1	5 9/16	5 3/8	5 3/16	4 15/16	4 3/8	-	-	-	-	-	-	-	-
2	-	-	-	9 15/16	9 13/16	9 5/8	9 3/8	9 1/8	8 13/16	8 7/16	8 1/16	7 5/8	-
3	6 1/2	6 5/16	6 1/8	5 7/8	5 5/16	-	-	-	-	-	-	-	-
4	-	-	-	10 7/8	10 3/4	10 9/16	10 5/16	10 1/16	9 3/4	9 3/8	9	8 9/16	-
5	-	8 5/8	8 3/8	8 1/16	7 5/8	7 3/16	-	-	-	-	-	-	-
6	-	-	-	-	12 7/8	12 3/4	12 9/16	12 3/8	12 1/8	11 7/8	11 1/16	11 1/8	10 9/16



Notes:

- When ordering, flange width and flange thickness may be specified by the AISC W-shape or S-shape designation, e.g., W8x35.
- Hanger rod in-plane and out-of-plane rotation resultant shall be ≤ 4° per MSS SP-58.
- Maximum load based on FIG. #755 Continuous Threaded Rod. Smaller rod sizes may be used. See FIG. #755 for load rating.
- Installation: Prior to tightening, cross rod shall sit on both spacers. Tighten nuts until cross rod bends slightly. Lock washers may not flatten.