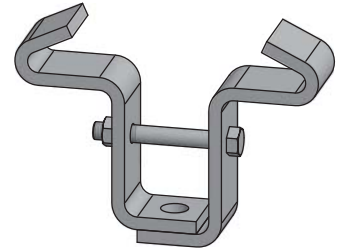




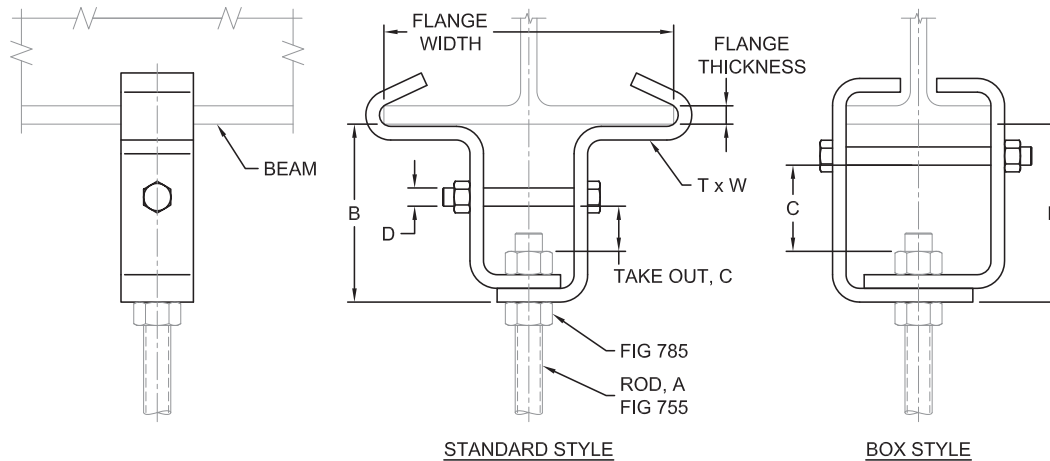
**FIG. 675**

## Adjustable Center Beam Clamp



- SERVICE:** To hang piping with a threaded rod from the bottom center of wide flange beams (W-Shape) or American standard beams (S-Shape). Provides vertical hanger rod adjustment. For hanger assemblies loaded by static tensile forces from piping or similar services.
- MATERIAL:** Carbon Steel meeting ASTM: A36, A307 Gr A, and A563 Gr A  
Stainless Steel Type 304 and 316 meeting ASTM: A240, F593, and F594
- FINISH:** Black or Electro-Galvanized meeting ASTM B633
- MAX TEMP:** 650°F for Black Carbon Steel and Stainless Steel  
350°F for Electro-Galvanized Carbon Steel
- STANDARDS:** MSS SP-58 Type 21, FS WW-H-171E Type 21
- ORDERING:** Specify figure number, size, flange width, flange thickness, material and finish. (Order installation hardware separately.)

SIZE	T x W	A	B	C	D	MAX FLANGE THICKNESS	WEIGHT EACH lbs - FLANGE WIDTH in							MAX. REC. LOAD, LBS.
							4	5	5½	6	6½	7	8	
2	¼ x 1½	½	4	1¾	½	½	2.0	2.1	2.2	2.2	2.3	2.3	2.4	850
3	⅜ x 1½	⅝	4½	2	½		2.9	3.1	3.3	3.3	3.5	3.5	3.7	1100
4	⅝ x 2	¾	4½	1	½		3.9	4.1	4.3	4.3	4.5	4.5	4.7	1500
5 Std	½ x 2	⅞	5	1	½		6.0†	6.2†	6.3	6.3	6.6	6.6	6.9	2600
5 Box †			5	2			6.0†	6.2†	6.3	6.3	6.6	6.6	6.9	
6 Std	½ x 2½	1	5	¾	⅝		8.0†	8.7†	9.1†	8.0	8.4	8.4	8.8	4300
6 Box †			5¼	2		8.0†	8.7†	9.1†	8.0	8.4	8.4	8.8		



**Notes:**

1. For flange widths greater than 8" use FIG. #695.
2. B dimension may vary ¼" due to flange thickness variations.
3. When ordering, flange width and flange thickness may be specified by the AISC W-Shape or S-shape designation, e.g., W8x35.