



FIG. 638

Junior Top Beam Clamp, Domestic

SERVICE: For attaching hanger rod to top or bottom flange of a beam or a bar joist, where thickness does not exceed 3/4". The open back design permits rod adjustment and visual verification during installation.

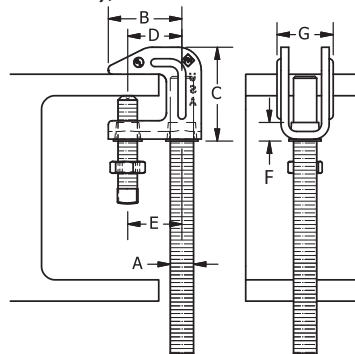
MATERIAL: Carbon Steel or 304 Stainless Steel

FINISH: Electro-Galvanized

STANDARDS: MSS SP-58 Type 19 & 23, FS WW-H-171E

APPROVALS: FM (NFPA 13, max related size), UL (Top & bottom of beam),

ORDERING: Specify figure number, rod size, and finish.
(Furnished with a hardened cup point set screw and lock nut.)



ROD SIZE "A"	B	C	D	E	F	G	WEIGHT EACH, LBS.	MAX. REC. LOAD, LBS
3/8	1 13/16	1 5/8	1 7/32	3/4	3/8 min.	1 5/16	0.20	400