



**FIG. 515**

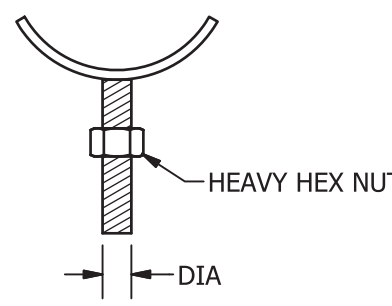
**Adjustable Pipe Support**

**SERVICE:** For use in conjunction with a standard pipe and flange at base to support piping where an overhead supporting member is not available. The stem is threaded the full length with a nut to allow a vertical adjustment to accommodate the pitch in the pipe line.

**MATERIAL:** Carbon Steel or 304/316 Stainless Steel

**FINISH:** Black, Electro-Galvanized or Hot-Dip Galvanized

**ORDERING:** Specify figure number, pipe size, material and finish.



| PIPE SIZE | STOCK SIZE  | DIA. & LENGTH OF STEM | WEIGHT EACH, LBS. |
|-----------|-------------|-----------------------|-------------------|
| 2         | 3/8 x 1 1/2 | 7/8 x 8               | 1.92              |
| 3         | 3/8 x 1 1/2 | 7/8 x 8               | 2.20              |
| 4         | 3/8 x 2     | 1 x 8                 | 3.23              |
| 5         | 3/8 x 2     | 1 x 8                 | 3.67              |
| 6         | 1/2 x 2     | 1 1/4 x 8             | 5.92              |
| 8         | 1/2 x 2     | 1 1/4 x 8             | 6.77              |
| 10        | 1/2 x 3     | 1 1/2 x 8             | 11.56             |
| 12        | 1/2 x 3     | 1 1/2 x 8             | 13.08             |