



FIG. 460
FIG. 465

Four-Bolt Socket Clamp for DI Pipe

Four-Bolt Socket Clamp Washer

SERVICE: For clamping mechanical joint piping, mechanical joint fittings or socket joint fittings together; thus stopping separation or distortion of pipe lines under excessive water pressure.

MATERIAL: Carbon Steel or 304/316 Stainless Steel

FINISH: Black, Electro-Galvanized or Hot-Dip Galvanized

STANDARDS: National Fire Protection Association Standard (NFPA) 24 for outside protection.

ORDERING: Specify figure number, pipe size, material and finish. (Two FIG. #465 Square Washers are required for each clamp and must be ordered separately.)

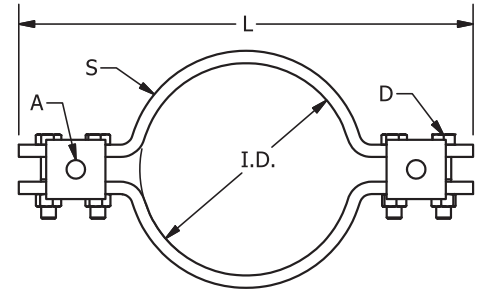


FIG. #460							
DI PIPE SIZE	ROD SIZE A	D	I.D.	L	STOCK SIZE S	WEIGHT EACH, LBS.	
						WASHER	CLAMP
4	3/4	5/8	4.80	14 ⁵ / ₈	1/2 x 2	1.25	10
6	3/4	5/8	6.90	16 ⁷ / ₈	1/2 x 2	1.25	12
8	3/4	5/8	9.05	19 ¹ / ₈	5/8 x 2 ¹ / ₂	1.25	21
10	1	3/4	11.10	23	5/8 x 2 ¹ / ₂	2.80	26
12	1	7/8	13.20	25 ¹ / ₈	5/8 x 3	2.80	35
14	1 ¹ / ₄	7/8	15.30	28 ¹ / ₄	3/4 x 3	2.80	45
16	1 ¹ / ₄	1	17.40	32 ¹ / ₈	3/4 x 4	2.80	69
18	1 ¹ / ₄	1 ¹ / ₄	19.40	35 ¹ / ₈	3/4 x 4	2.80	86
20	1 ³ / ₈	1 ¹ / ₄	21.60	37 ³ / ₄	3/4 x 5	2.80	108
24	1 ¹ / ₂	1 ¹ / ₂	25.80	44 ¹ / ₂	3/4 x 5	2.80	134

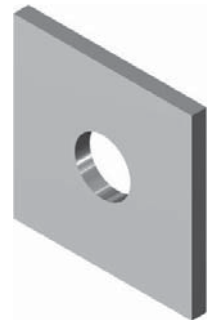


FIG. #465

FIG. #465			
PIPE SIZE	TIE ROD SIZE	STOCK SIZE	WEIGHT EACH, LBS.
4	3/4	1/2 x 3 x 3	1.25
6	3/4	1/2 x 3 x 3	1.25
8	3/4	1/2 x 3 x 3	1.25
10	1	5/8 x 4 x 4	2.80
12	1	5/8 x 4 x 4	2.80
14	1 ¹ / ₄	5/8 x 4 x 4	2.80
16	1 ¹ / ₄	5/8 x 4 x 4	2.80
18	1 ¹ / ₄	5/8 x 4 x 4	2.80
20	1 ³ / ₈	5/8 x 4 x 4	2.80
24	1 ¹ / ₂	5/8 x 4 x 4	2.80
30	1 ¹ / ₂	5/8 x 4 x 4	2.80
36	1 ¹ / ₂	5/8 x 4 x 4	2.80