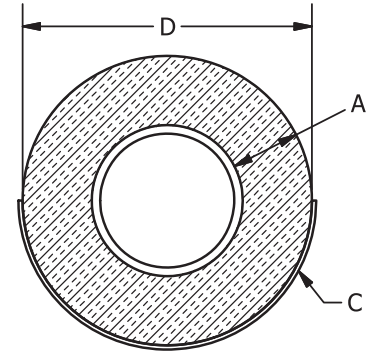
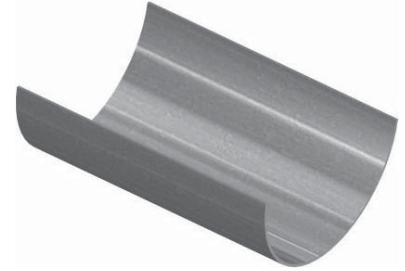




FIG. 307

MSS Pipe Covering Protection Shield

SERVICE: For use on the outside of foam or fiberglass insulation.
MATERIAL: Carbon Steel or 304/316 Stainless Steel
FINISH: Pre-Galvanized
STANDARDS: MSS SP-58 Type 40, FS WW-H171E Type 41
ORDERING: Specify figure number, shield size and material.



SHIELD SIZE NO.	LENGTH	STOCK SIZE C	DIA. D	HANGER SIZE	WEIGHT PER 100, LBS.
0	12	18ga	1 ⁷ / ₈	1 ¹ / ₂	53
1	12	18ga	2 ³ / ₈	2	68
2	12	18ga	2 ⁷ / ₈	2 ¹ / ₂	82
3	12	18ga	3 ¹ / ₂	3	93
4	12	18ga	4	3 ¹ / ₂	103
5	12	18ga	4 ¹ / ₂	4	118
6	12	18ga	5	5	133
7	12	18ga	5 ⁹ / ₁₆	5	147
8	12	16ga	6 ⁵ / ₈	6	233
9	12	16ga	7 ⁵ / ₈	7	266
10	12	16ga	8 ⁵ / ₈	8	300
11	18	16ga	7 ⁵ / ₈	7	399
12	18	16ga	8 ⁵ / ₈	8	449
13	18	16ga	9 ⁵ / ₈	10	503
14	18	16ga	10 ³ / ₄	10	562
15	24	14ga	11 ³ / ₄	12	1012
16	24	14ga	12 ³ / ₄	12	1094
17	24	14ga	14	14	1203
18	24	14ga	15	16	1292
19	24	14ga	16	16	1374
20	24	14ga	17	18	1463
21	24	12ga	18	18	2133
22	24	12ga	19	20	2256
23	24	12ga	20	20	2379
24	24	12ga	21	24	2492
25	24	12ga	22	24	2615
26	24	12ga	23	24	2737
27	24	12ga	24	24	2851
28	24	12ga	26	30	3087
29	24	12ga	27	30	3209
30	24	12ga	28	30	3322

TUBING SIZE	A - Insulation Thickness				
	1/2	3/4	1	1 1/2	2
1/2	0	1	2	4	5
3/4	0	1	2	4	6
1	1	2	3	4	6
1 1/4	1	2	3	5	7
1 1/2	2	3	3	5	7
2	3	4	4	6	8
2 1/2	4	5	5	7	8
3	5	6	6	8	9
3 1/2	6	7	7	8	9
4	7	7	8	9	10
5	8	8	9	10	13
6	9	9	10	13	14

PIPE SIZE	A - Insulation Thickness				
	1/2	3/4	1	1 1/2	2
1/2	0	1	-	-	-
3/4	1	1	2	4	6
1	1	2	3	5	7
1 1/4	2	3	3	6	7
1 1/2	2	3	4	6	7
2	3	4	5	7	8
2 1/2	4	5	6	7	8
3	5	6	7	8	9
3 1/2	-	-	8	9	10
4	-	-	8	9	10
5	-	-	9	10	13
6	-	-	10	13	14
8	-	-	14	15	16
10	-	-	16	17	18
12	-	-	18	19	20
14	-	-	19	20	21
16	-	-	21	22	23
18	-	-	23	24	25
20	-	-	25	26	27
24	-	-	28	29	30