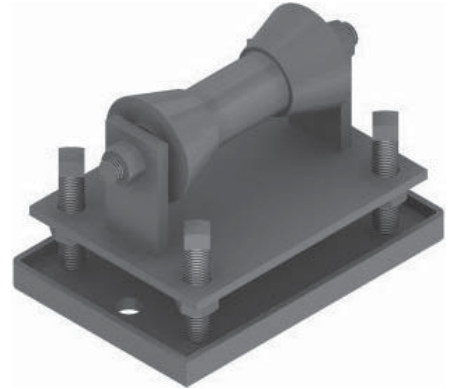




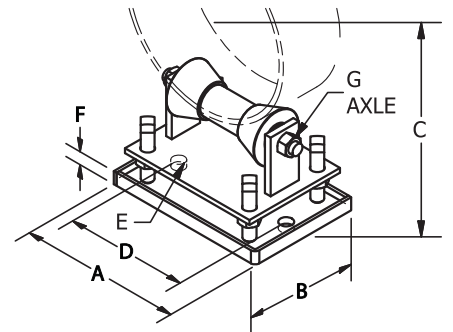
FIG. 249

Adjustable Pipe Roller Stand

- SERVICE:** For use on lines subject to horizontal movement.
- MATERIAL:** Carbon Steel frame with Cast Iron roll or 304/316 Stainless Steel frame with 304 Stainless Steel roll
- FINISH:** Black, Electro-Galvanized or Hot-Dip Galvanized
- STANDARDS:** MSS SP-58 Type 46, FS WW-H-171E Type 47
- ORDERING:** Specify figure number, pipe size, material and finish.



PIPE SIZE	A	B	C MIN.	C MAX.	D	E	F	G	WEIGHT EACH, LBS.	MAX. REC. LOAD, LBS.
2	6 ⁷ / ₈	6 ¹ / ₂	4 ³ / ₄	5 ⁵ / ₈	3 ⁷ / ₈	1	1	1/2	11.00	390
2 ¹ / ₂	6 ⁷ / ₈	6 ¹ / ₂	5	5 ⁷ / ₈	3 ⁷ / ₈	1	1	1/2	11.00	390
3	6 ⁷ / ₈	6 ¹ / ₂	5 ⁵ / ₁₆	6 ³ / ₁₆	3 ⁷ / ₈	1	1	1/2	11.00	390
3 ¹ / ₂	6 ⁷ / ₈	6 ¹ / ₂	5 ⁹ / ₁₆	6 ⁷ / ₁₆	3 ⁷ / ₈	1	1	1/2	11.00	390
4	8 ¹ / ₂	6	6 ³ / ₁₆	7 ⁷ / ₁₆	5 ¹ / ₈	1	1	1/2	13.10	950
5	8 ¹ / ₂	6	6 ³ / ₄	8	5 ¹ / ₈	1	1	1/2	13.10	950
6	8 ¹ / ₂	6	7 ¹ / ₄	8 ¹ / ₂	5 ¹ / ₈	1	1	1/2	13.10	950
8	10 ¹ / ₂	7 ¹ / ₂	10 ¹ / ₈	11 ¹¹ / ₁₆	7 ³ / ₈	1	1	3/4	29.00	2100
10	10 ¹ / ₂	7 ¹ / ₂	11 ³ / ₁₆	12 ³ / ₄	7 ³ / ₈	1	1	3/4	29.00	2100
12	12 ¹ / ₂	8 ¹ / ₂	12 ³ / ₄	14 ¹ / ₈	9 ¹ / ₂	1	1	7/8	40.00	3075
14	12 ¹ / ₂	8 ¹ / ₂	13 ³ / ₈	14 ³ / ₄	9 ¹ / ₂	1	1	7/8	40.00	3075
16	14 ⁵ / ₈	11	15 ³ / ₈	17 ¹ / ₄	11 ¹ / ₈	1	1	1 ¹ / ₈	63.84	4980
18	14 ⁵ / ₈	11	16 ³ / ₈	18 ¹ / ₄	11 ¹ / ₈	1	1	1 ¹ / ₈	63.84	4980
20	14 ⁵ / ₈	11	17 ³ / ₈	19 ¹ / ₄	11 ¹ / ₈	1	1	1 ¹ / ₈	63.84	4980
24	15 ³ / ₄	11	19 ¹ / ₄	21 ¹ / ₄	12 ¹ / ₄	1	1	1 ¹ / ₄	71.00	6100
30	19 ¹ / ₂	10 ³ / ₄	24 ⁷ / ₁₆	26 ¹¹ / ₁₆	15 ³ / ₄	1	1 ¹ / ₂	1 ³ / ₄	125.28	7500
36	23	12 ³ / ₄	28 ¹³ / ₁₆	30 ¹³ / ₁₆	19	1 ¹ / ₈	2	2	214.4	12000
42	23	12 ³ / ₄	31 ¹⁵ / ₁₆	33 ¹⁵ / ₁₆	19	1 ¹ / ₈	2	2	214.4	12000



NOTE: "C" dimension is the center of pipe to bottom of base plate. "D" dimension is center to center of mounting holes in bottom plate. "E" dimension is the diameter of the mounting holes in bottom plate.