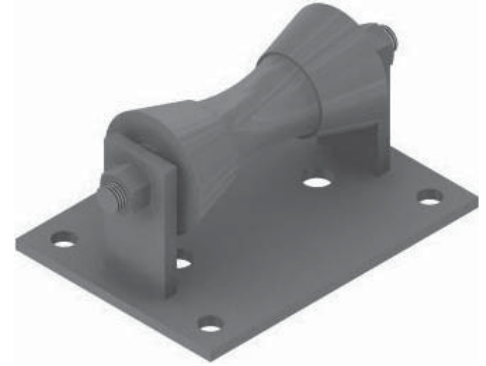




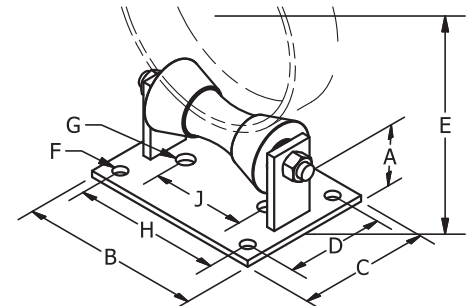
FIG. 248

Pipe Roller Stand

- SERVICE:** For use on lines subject to horizontal movement.
- MATERIAL:** Carbon Steel frame with Cast Iron roll or 304/316 Stainless Steel frame with 304 Stainless Steel roll
- FINISH:** Black, Electro-Galvanized or Hot-Dip Galvanized
- STANDARDS:** MSS SP-58 Type 44, FS WW-H-171E Type 45
- ORDERING:** Specify figure number, pipe size, material and finish.



PIPE SIZE	A	B	C	D	E	DIA. F	DIA. G	H	J	WEIGHT EACH, LBS.	MAX. REC. LOAD, LBS.
2	1 ³ / ₄	8 ³ / ₈	6	4	3 ¹¹ / ₁₆	⁹ / ₁₆	1	3 ³ / ₈	6 ³ / ₈	5.08	390
2 ¹ / ₂	1 ³ / ₄	8 ³ / ₈	6	4	3 ¹⁵ / ₁₆	⁹ / ₁₆	1	3 ³ / ₈	6 ³ / ₈	5.08	390
3	1 ³ / ₄	8 ³ / ₈	6	4	4 ¹ / ₄	⁹ / ₁₆	1	3 ³ / ₈	6 ³ / ₈	5.08	390
3 ¹ / ₂	1 ³ / ₄	8 ³ / ₈	6	4	4 ¹ / ₂	⁹ / ₁₆	1	3 ³ / ₈	6 ³ / ₈	5.08	390
4	2	9 ⁷ / ₈	6	4 ¹ / ₄	5	⁹ / ₁₆	1	4 ³ / ₄	7 ⁷ / ₈	6.31	950
5	2	9 ⁷ / ₈	6	4 ¹ / ₄	5 ⁹ / ₁₆	⁹ / ₁₆	1	4 ³ / ₄	7 ⁷ / ₈	6.31	950
6	2	9 ⁷ / ₈	6	4 ¹ / ₄	6 ¹ / ₁₆	⁹ / ₁₆	1	4 ³ / ₄	7 ⁷ / ₈	6.31	950
8	3 ³ / ₈	8 ⁵ / ₈	8	5	8 ¹³ / ₁₆	¹¹ / ₁₆	1	7	4	13.65	2100
10	3 ³ / ₈	8 ⁵ / ₈	8	5	9 ⁷ / ₈	¹¹ / ₁₆	1	7	4	13.65	2100
12	3 ⁷ / ₈	11	8	6	11 ⁷ / ₁₆	¹³ / ₁₆	1	9	5 ³ / ₄	21.00	3075
14	3 ⁷ / ₈	11	8	6	12 ¹ / ₁₆	¹³ / ₁₆	1	9	5 ³ / ₄	21.00	3075
16	4 ¹ / ₄	12 ³ / ₈	10	6 ¹ / ₂	13 ⁵ / ₈	¹³ / ₁₆	1	10 ³ / ₈	6 ³ / ₄	34.23	4980
18	4 ¹ / ₄	12 ³ / ₈	10	6 ¹ / ₂	14 ¹¹ / ₁₆	¹³ / ₁₆	1	10 ³ / ₈	6 ³ / ₄	34.23	4980
20	4 ¹ / ₄	12 ³ / ₈	10	6 ¹ / ₂	15 ¹¹ / ₁₆	¹³ / ₁₆	1	10 ³ / ₈	6 ³ / ₄	34.23	4980
24	4 ³ / ₈	13 ¹ / ₂	10	6 ¹ / ₂	17 ¹¹ / ₁₆	¹³ / ₁₆	1	11 ¹ / ₂	7 ¹ / ₂	40.00	6100
30	5	17	10	7 ³ / ₄	21 ³ / ₄	1 ¹ / ₈	1	14 ¹ / ₄	10	71.32	7500
36	5 ³ / ₄	20	12	9	25 ³ / ₄	1 ⁵ / ₈	1	17	12	147.00	12000
42	5 ³ / ₄	20	12	9	28 ⁷ / ₈	1 ⁵ / ₈	1	17	12	147.00	12000



NOTE: "A" dimension is the center of axle to bottom of plate. "E" dimension is the center of pipe to bottom of base plate.