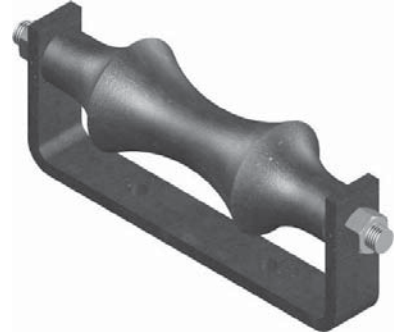




FIG. 245

Roller Chair

- SERVICE:** For use on lines subject to horizontal movement.
- MATERIAL:** Carbon Steel frame with Cast Iron roll or 304/316 Stainless Steel frame with 304 Stainless Steel roll.
- FINISH:** Black, Electro-Galvanized or Hot-Dip Galvanized
- STANDARDS:** MSS SP-58 Type 44, FS WW-H-171E Type 45
- ORDERING:** Specify figure number, pipe size, material and finish.



PIPE SIZE	B	C	D	L	STOCK SIZE S	WEIGHT EACH, LBS.	MAX. REC. LOAD, LBS.
2	1 1/2	1 1/2	1 1/4	7/16	1/4 X 1 1/4	1.06	390
3	2 1/4	1 3/4	2	7/16	1/4 X 1 1/4	1.50	390
4	2 7/8	2 1/4	2	9/16	3/8 X 1 1/2	2.88	950
5	3 3/8	2 1/2	2 1/2	9/16	3/8 X 1 1/2	3.50	950
6	3 7/8	2 3/4	3 1/4	9/16	3/8 X 2	5.50	950
7	4 1/2	2 7/8	3 1/2	9/16	3/8 X 2	7.00	1350
8	5 1/8	3	4	11/16	3/8 X 2	7.31	1350
10	6 3/8	3 5/8	5	11/16	1/2 X 2	12.44	1730
12	7 1/2	4 1/8	6	11/16	1/2 X 2	16.50	2400
14	8 3/8	4 11/16	6 1/2	13/16	1/2 X 2 1/2	24.50	3130
16	9 3/8	5 3/8	8 1/4	13/16	1/2 X 3	34.50	3970
18	10 7/16	6	9 1/4	13/16	1/2 X 3	36.50	4200
20	11 5/8	6 1/2	10 1/4	13/16	1/2 X 3	45.00	4550
24	14	7 7/8	12 1/4	15/16	5/8 X 4	77.50	6160
30	17 15/16	8 3/4	15 3/8	15/16	5/8 X 4	110.00	7290

