



FIG. 235

V-Channel

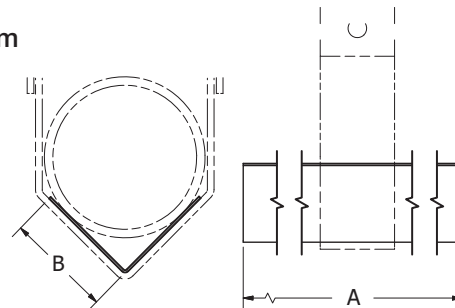
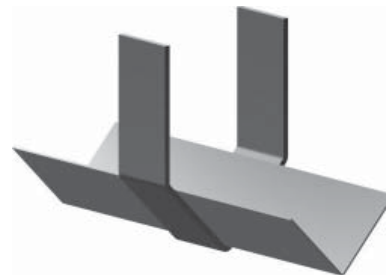
SERVICE: For the suspension of flexible pipe, tubing or hose. Channel must be used in conjunction with FIG. #230 V-Bottom Adjustable Clevis Hangers. Pipe is laid directly into the V-Channel and where necessary, the V-Channel may be cut to allow for fittings or couplings. Where practical, the hangers should be placed as close to the V-Channel joint as possible.

MATERIAL: Carbon Steel

FINISH: Pre-Galvanized

MAX TEMP: Maximum 450°F (Determined by type of pipe supported)

ORDERING: Specify figure number and channel number. (FIG. #230 V-Bottom Adjustable Clevis Hangers must be ordered separately.)



CHANNEL NO.	PIPE SIZE	A	B	STEEL THICKNESS	WEIGHT EACH, LBS.	MAX. REC. LOAD, LBS.
1	1/2 to 2	120	1 1/2	18ga	5.4	150
2	2 1/2 to 4	120	3	18ga	10.8	250