



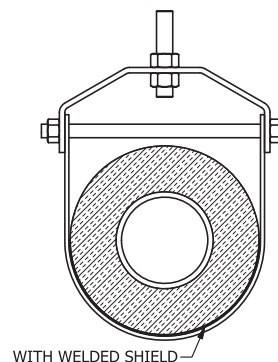
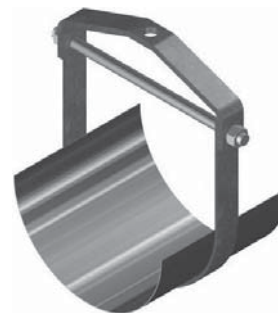
FIG. 220

Clevis Hanger w/ Welded Shield

FIG. 221

Clevis Hanger w/ Welded MSS Shield

- SERVICE:** For vapor sealed lines.
MATERIAL: Carbon Steel or 304/316 Stainless Steel
FINISH: Black or Electro-Galvanized
ORDERING: Specify figure number, pipe size, insulation thickness, material and finish. (FIG. #220 is supplied with a FIG. #300 Pipe Covering Protection Shield. FIG. #221 is supplied with a FIG. #307 MSS Pipe Covering Protection Shield.)



HANGER SIZE SELECTION GUIDE						
PIPE SIZE	THICKNESS OF PIPE INSULATION					
	1/2"	1"	1 1/2"	2"	2 1/2"	3"
1/2	1 1/2	2 1/2	3 1/2	5	6	7
3/4	2	3	3 1/2	5	6	7
1	2	3	4	5	6	7
1 1/4	2 1/2	3 1/2	4	5	6	7
1 1/2	2 1/2	3 1/2	5	6	7	8
2	3	4	5	6	7	8
2 1/2	3 1/2	5	6	7	8	10
3	4	5	6	7	8	10
3 1/2	5	6	7	8	10	10
4	5	6	7	8	10	10
5	6	7	8	10	10	12
6	7	8	10	10	12	12
8	10	10	12	12	14	16
10	12	12	14	16	16	18
12	14	16	16	18	18	20
14	16	16	18	18	20	20
16	18	18	20	20	24	24