



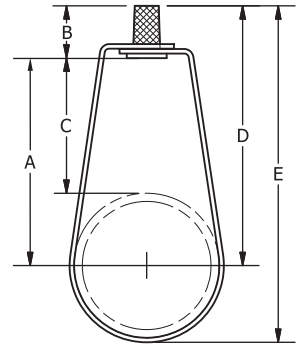
**FIG. 110**

**Adjustable Swivel Ring Hanger, NFPA**

- SERVICE:** For suspension of non-insulated, stationary piping services. Approved for use without additional locking nuts normally required with pipe hangers.
- MATERIAL:** Carbon Steel
- FINISH:** Electro-Galvanized
- STANDARDS:** MSS SP-58 Type 10, FS WW-H-171E Type 10
- APPROVALS:** FM (2'½" - 8"), UL (2'½" - 8")
- ORDERING:** Specify figure number and pipe size.



SPRINKLER SERVICE HANGER									
PIPE SIZE	NFPA ROD SIZE	A	B	C	D	E	STOCK SIZE	WEIGHT EACH, LBS.	MAX. REC. LOAD, LBS.
½	⅜	1 ⅝	⅞	1 ⅜	2 ½	2 ⅞	18ga x ⅝	0.08	400
¾	⅜	1 ⅞	⅞	1 ⅞	2 ⅞	2 ⅞	18ga x ⅝	0.08	400
1	⅜	1 ¾	⅞	1 ⅞	2 ⅝	3 ¼	18ga x ⅝	0.08	600
1 ¼	⅜	1 11/16	⅞	⅞	2 9/16	3 ⅜	18ga x ⅝	0.10	600
1 ½	⅜	1 13/16	⅞	⅞	2 11/16	3 ⅝	18ga x ⅝	0.10	600
2	⅜	2 ½	⅞	1 ⅝	3 ⅜	4 ½	18ga x ⅝	0.12	600
2 ½	⅜	3 ⅞	⅞	1 ⅜	3 ⅞	5 ⅜	14ga x ¾	0.24	600
3	⅜	3 ⅝	⅞	1 ⅝	4 ½	6 ¼	14ga x ¾	0.28	600
3 ½	⅜	4	⅞	1 ¾	4 ⅞	6 ⅞	14ga x ¾	0.32	600
4	⅜	4 ⅞	⅞	1 ⅝	5	7 ¼	14ga x ¾	0.32	1000
5	½	4 ¼	1 ⅞	1 ⅞	5 ¾	8 ½	13ga x ¾	0.62	1000
6	½	5 ⅞	1 ⅞	2 ⅞	6 ¾	10 ⅞	12ga x ¾	0.65	1250
8	½	7	1 ⅞	2 ⅞	7 ⅞	12 ¼	11ga x 1	1.00	1250



**NOTE:** In accordance with the National Fire Protection Association (NFPA 13)