



FIG. 110 Adjustable Swivel Ring Hanger for Copper Tubing

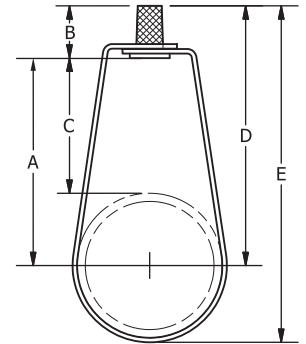
SERVICE: For suspension of non-insulated, stationary copper tubing services. Approved for use without additional locking nuts normally required with pipe hangers.

MATERIAL: Carbon Steel

FINISH: Copper Plated or Copper Epoxy Coated (COPPER-GARD)

STANDARDS: MSS SP-58 Type 10, FS WW-H-171E Type 10

ORDERING: Specify figure number, tube size and finish.



COPPER TUBING HANGER										
TUBE SIZE	TUBE OD	ROD SIZE	A	B	C	D	E	STOCK SIZE	WEIGHT EACH, LBS.	MAX REC. LOAD, LBS.
1/2	0.625	3/8	1 13/16	7/8	1 1/2	2 11/16	3	18ga x 5/8	0.07	300
3/4	0.875	3/8	1 5/8	7/8	1 3/16	2 1/2	2 15/16	18ga x 5/8	0.07	300
1	1.125	3/8	1 9/16	7/8	1	2 7/16	3	18ga x 5/8	0.07	300
1 1/4	1.375	3/8	1 5/8	7/8	1 5/16	2 1/2	3 3/16	18ga x 5/8	0.08	300
1 1/2	1.625	3/8	1 11/16	7/8	7/8	2 9/16	3 3/8	18ga x 5/8	0.09	300
2	2.125	3/8	2 7/16	7/8	1 3/8	3 5/16	4 3/8	18ga x 5/8	0.10	300
2 1/2	2.625	1/2	2 13/16	1 1/16	1 1/2	3 7/8	5 9/16	14ga x 1	0.31	525
3	3.125	1/2	3 1/8	1 1/16	1 9/16	4 3/16	5 3/4	14ga x 1	0.35	525
3 1/2	3.625	1/2	3 1/2	1 1/16	1 11/16	4 9/16	6 3/8	14ga x 1	0.38	525
4	4.125	1/2	3 3/4	1 1/16	1 11/16	4 13/16	6 15/16	14ga x 1	0.41	650
5	5.125	1/2	4 1/8	1 1/16	1 9/16	5 3/16	7 13/16	14ga x 1	0.48	1000
6	6.125	1/2	4 5/8	1 1/16	1 9/16	5 11/16	8 15/16	14ga x 1	0.53	1000

NOTE: In accordance with ASTM B88